

Texture

Texture maps

- Surface color and transparency
- Environment and irradiance maps
- Reflectance maps
- Shadow maps
- Displacement and bump maps

Level of detail hierarchy

Procedural shading and texturing

Texture synthesis and noise

Texture Maps

How is texture mapped to the surface?

- Dimensionality: 1D, 2D, 3D
- Texture coordinates (s,t)
 - Surface parameters (u,v)
 - Direction vectors: reflection R, normal N, halfway H
 - Projection: cylinder
 - Developable surface: polyhedral net
 - Reparameterize a surface: old-fashion model decal

What does texture control?

- Surface color and opacity
- Illumination functions: environment maps, shadow maps
- Reflection functions: reflectance maps
- Perturb geometry: bump and displacement maps

History

Catmull/Williams 1974 - basic idea

Blinn and Newell 1976 - basic idea, reflection maps

Blinn 1978 - bump mapping

Williams 1978, Reeves *et al.* 1987 - shadow maps

Smith 1980, Heckbert 1983 - texture mapped polygons

Williams 1983 - mipmaps

Miller and Hoffman 1984 - illumination and reflectance

Perlin 1985, Peachey 1985 - solid textures

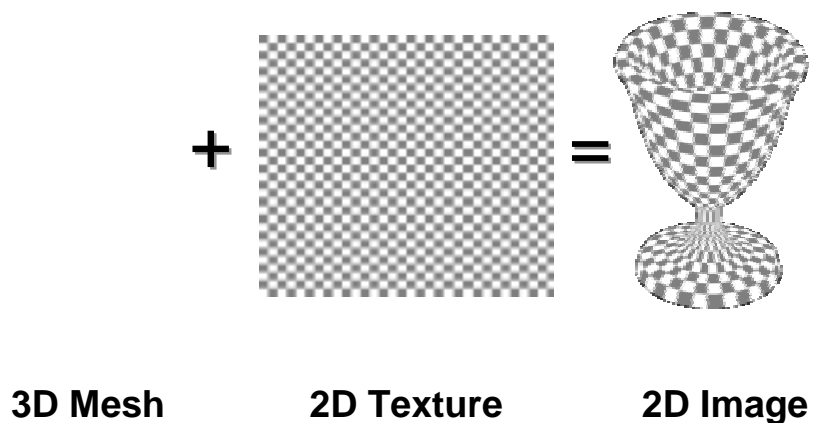
Greene 1986 - environment maps/world projections

Akeley 1993 - Reality Engine

CS348B Lecture 12

Pat Hanrahan, Spring 2001

Texture Mapping



CS348B Lecture 12

Pat Hanrahan, Spring 2001

Surface Color and Transparency

Tom Porter's Bowling Pin



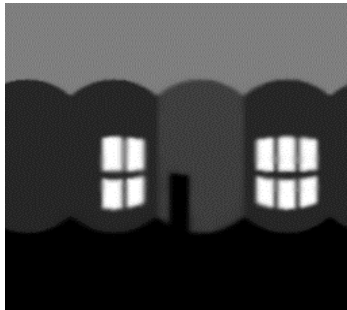
Source: RenderMan Companion, Pls. 12 & 13

CS348B Lecture 12

Pat Hanrahan, Spring 2001

Reflection Maps

Blinn and Newell, 1976

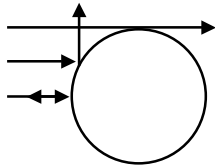


CS348B Lecture 12

Pat Hanrahan, Spring 2001

Gazing Ball

Miller and Hoffman, 1984

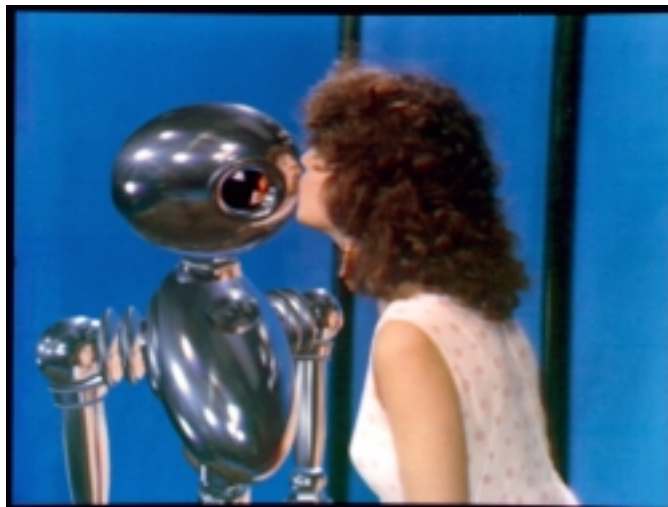


- Photograph of mirror ball
- Maps all directions to a circle
- Resolution function of orientation
- *Reflection indexed by normal*

CS348B Lecture 12

Pat Hanrahan, Spring 2001

Environment Maps



Interface, Chou and Williams (ca. 1985)

CS348B Lecture 12

Pat Hanrahan, Spring 2001

Environment Map Approximation



Ray Traced



Environment Map

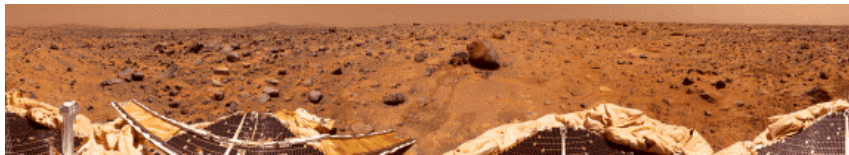
Self reflections are missing in the environment map

CS348B Lecture 12

Pat Hanrahan, Spring 2001

Cylindrical Panoramas

QuickTime VR



Mars Pathfinder



Memorial Church (Ken Turkowski)

CS348B Lecture 12

Pat Hanrahan, Spring 2001

Fisheye Lens

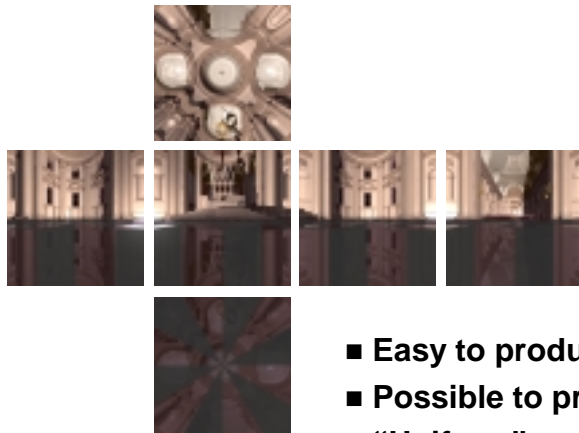


Pair of 180 degree fisheye
Photo by K. Turkowski

CS348B Lecture 12

Pat Hanrahan, Spring 2001

Cubical Environment Map



- Easy to produce with rendering system
- Possible to produce from photographs
- “Uniform” resolution
- Simple texture coordinates calculation

CS348B Lecture 12

Pat Hanrahan, Spring 2001

Direction Maps

Many ways to map directions to images...

Methods:

- Latitude-Longitude (Map Projections) [Newell and Blinn]
Create by painting
- Gazing Ball (N) [Miller and Hoffman]
Create by photographing a reflective sphere
- Fisheye Lens
Standard camera lens
- Cubical Environment Map (R)
Create with a rendering program, photography...

Issues:

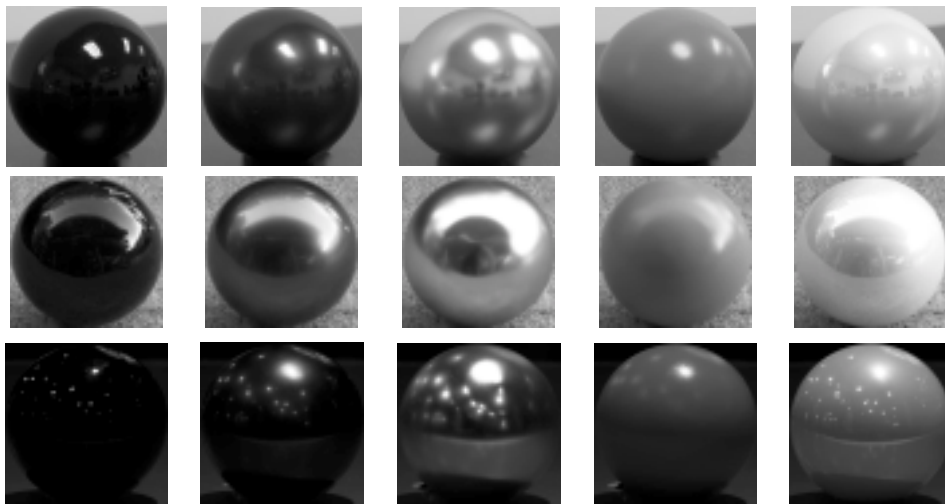
- Non-linear mapping - expensive, curved lines
- Area distortion - spatially varying resolution
- Convert between maps using image warp

CS348B Lecture 12

Pat Hanrahan, Spring 2001

Combining Reflectance & Illumination

Photographs of 5 spheres in 3 environments (Adelson and Dror)

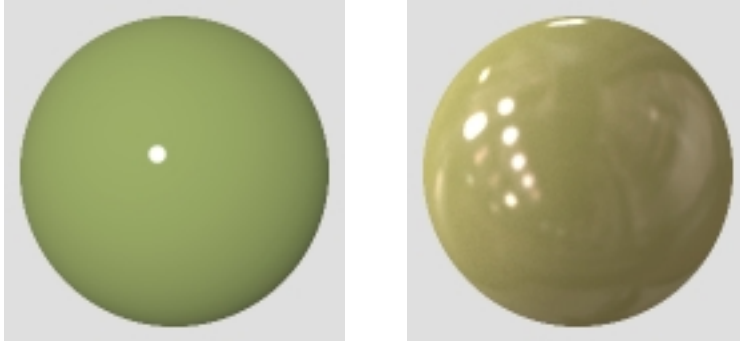


CS348B Lecture 12

Pat Hanrahan, Spring 2001

Material Recognition

People recognize materials more easily under natural illumination than simplified illumination.

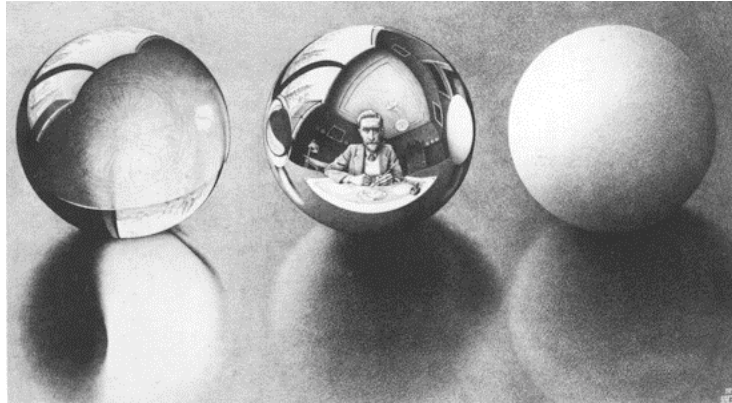


Illusion due to Ted Adelson

CS348B Lecture 12

Pat Hanrahan, Spring 2001

Reflectance Maps



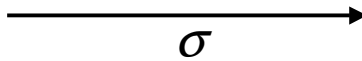
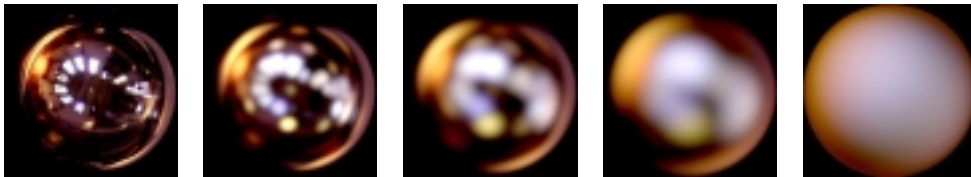
For a given viewing direction
For each normal direction
For each incoming direction (hemispherical integral)
Evaluate reflection equation

CS348B Lecture 12

Pat Hanrahan, Spring 2001

Example: Phong Model

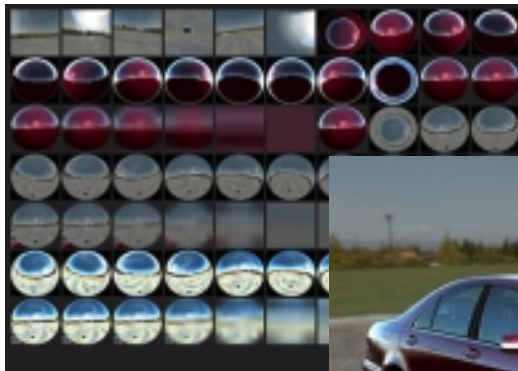
Rough surfaces blur highlight



CS348B Lecture 12

Pat Hanrahan, Spring 2001

Reflectance Space Shading



12 directions

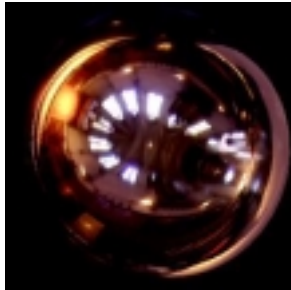
Cabral, Olano, Nemic
1999



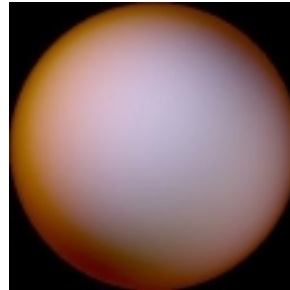
CS348B Lecture 12

Pat Hanrahan, Spring 2001

Example: Lambertian Reflectance



Incident Lighting

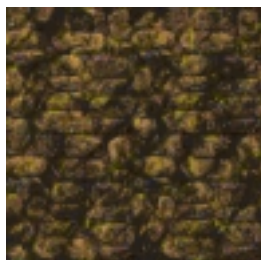


Reflected Light

$$B(\hat{\mathbf{N}}) = \rho E(\hat{\mathbf{N}})$$

Radiosity or Irradiance Map

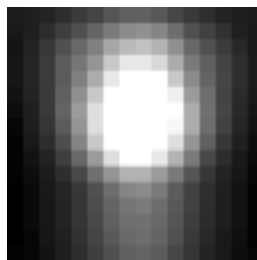
Illumination Maps



Reflectance

$$\rho(x)$$

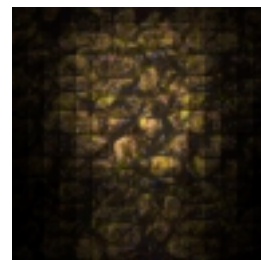
*



Irradiance

$$E(x)$$

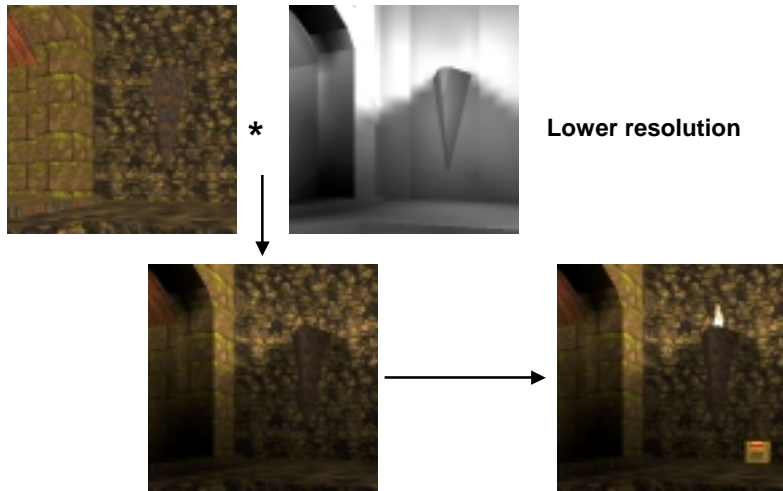
=



Radiosity

$$B(x)$$

Quake Light Maps



CS348B Lecture 12

Pat Hanrahan, Spring 2001

Shadow Maps

May incorporate shadow maps into lighting calculations



CS348B Lecture 12

Pat Hanrahan, Spring 2001

Correct Shadow Maps

Step 1:

Create z-buffer of scene as seen from light source

Step 2.

Render scene as seen from the eye

For each light

Transform point into light coordinates

return $(z_l < z_{buffer[x][y]}) ? 1 : 0$

CS348B Lecture 12

Pat Hanrahan, Spring 2001

Barzel's *UberLight.sl*

Inconsistent Shadows



Projected Shadow Matte



Projected Texture



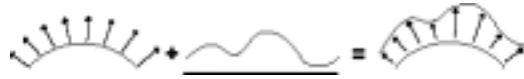
Example of a complex shader

```
UberLight( )
{
  Clip to near/far planes
  Clip to shape boundary
  foreach superelliptical blocker
    atten *= ...
  foreach cookie texture
    atten *= ...
  foreach slide texture
    color *= ...
  foreach noise texture
    atten, color *= ...
  foreach shadow map
    atten, color *= ...
  Calculate intensity fall-off
  Calculate beam distribution
}
```

CS348B Lecture 12

Pat Hanrahan, Spring 2001

Displacement/Bump Mapping



$$\mathbf{P}(u, v)$$

$$\mathbf{T}_u(u, v) = \frac{\partial \mathbf{P}(u, v)}{\partial u} \quad \mathbf{T}_v(u, v) = \frac{\partial \mathbf{P}(u, v)}{\partial v}$$

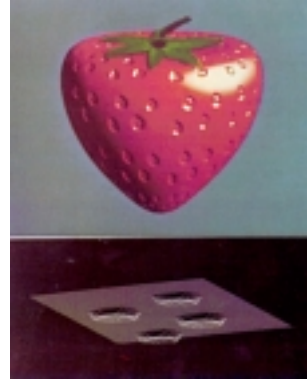
$$\mathbf{N}(u, v) = \mathbf{P}_u \times \mathbf{P}_v$$

■ Displacement

$$\mathbf{P}'(u, v) = \mathbf{P}(u, v) + h(u, v)\mathbf{N}(u, v)$$

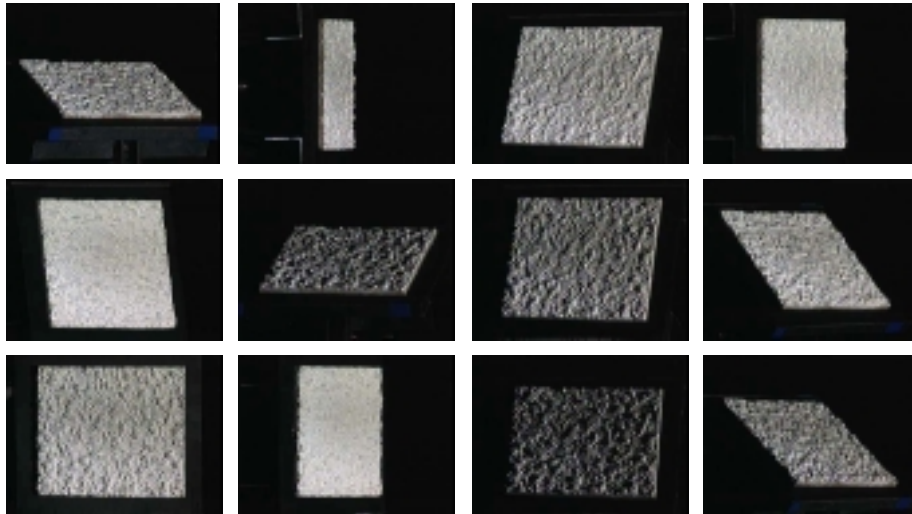
■ Perturbed normal

$$\begin{aligned} \mathbf{N}'(u, v) &= \mathbf{P}'_u \times \mathbf{P}'_v \\ &= \mathbf{N} + h_u(\mathbf{T}_v \times \mathbf{N}) + h_v(\mathbf{T}_u \times \mathbf{N}) \end{aligned}$$



From Blinn 1976

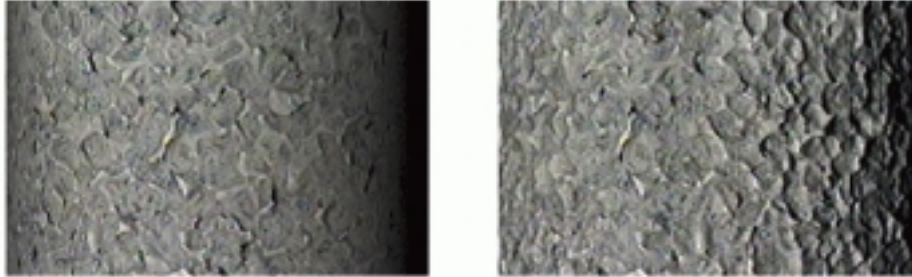
Bidirectional Texture Function (BTF)



Plaster

BTF Mapping

Complex interplay between texture and reflection



CS348B Lecture 12

Pat Hanrahan, Spring 2001

Hierarchy

Physics

Computer Graphics

Geometrical optics

- Macro-structures
- Transport
- Micro-structures
- Microfacets

Physical optics

Kirchoff approx.

Quantum optics

Geometry

Displacement (P) maps

Bump (N) maps

Reflection

Texture



CS348B Lecture 12

Pat Hanrahan, Spring 2001